

G30

Manual Clamping Gyroscopic Mixer



- ➡ Robust and Reliable
- ➡ Easy Maintenance

SANTINT • CHINA

Add: Feilong Road, Xingyang,
Zhengzhou, China
Email: info@santint.com

SANTINT • HOLLAND

Add: Lageweg 35 - J, 2222 AG
Katwijk The Netherlands
Email: sales@santint-europe.com

SANTINT • POLAND

Add: ul. Postepu 19. mag.5
02-676 Warszawa Polska
Email: gianni.capozzi@santint.com

SANTINT • U.S.A

Add: 2000 Bloomingdale Road,
Suite 220, Glendale Heights,
IL 60139, U.S.A
Email: frank@santint.com

SANTINT • INDIA

Add: Gala No.2/3, Building No.E-3,
Hari-Har Compound ,Near Gajanan
Petrol Pump, Mankoli Naka, Dapoda
Village, Bhiwandi - 421302 Thane,
Maharashtra, India.
Email: tony@santint.com

SANTINT • BRASIL

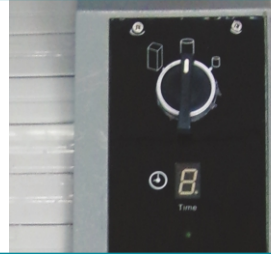
Add: Rua Rosa Kasinski,
1109 (Galpão 30) - Capuava
- Cep: 09380-128 - Mauá / Sp
Email: contato@santint.com

G30 FEATURES >>>



1 3 Mixing Speeds

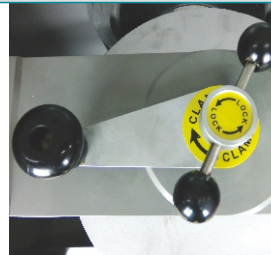
Different speeds to suit various can sizes.



2 Robust And Reliable

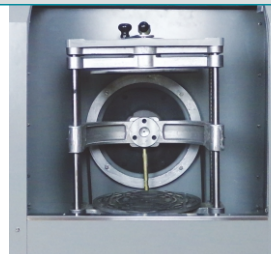
Simple structure, heavy loading.

3 Safety Lock



4 Easy Maintenance

5 Simple Inner Structure



- Motor Power 0.75 KW
- Power Supply 220/110 V 50/60 Hz
- Plate Moving Range 75~430 mm
- Mixing Speed 110/130/150 rpm

- Can Weight 35 Kg
- Can Size Diameter 50~300 mm Height 80~420 mm
- Mixing Range 1~20 L

- Mixing Time 4 Mins for square Can 3 Mins for big can 2 Mins for small can
- Machine Dimension (W×D×H) 855×715×1040 mm
- Packing Dimension (W×D×H) 910×790×1175 mm 26 Pieces/20'Container

- Net Weight 155 Kg
- Noise <70 dB

G30

Technical Parameters

